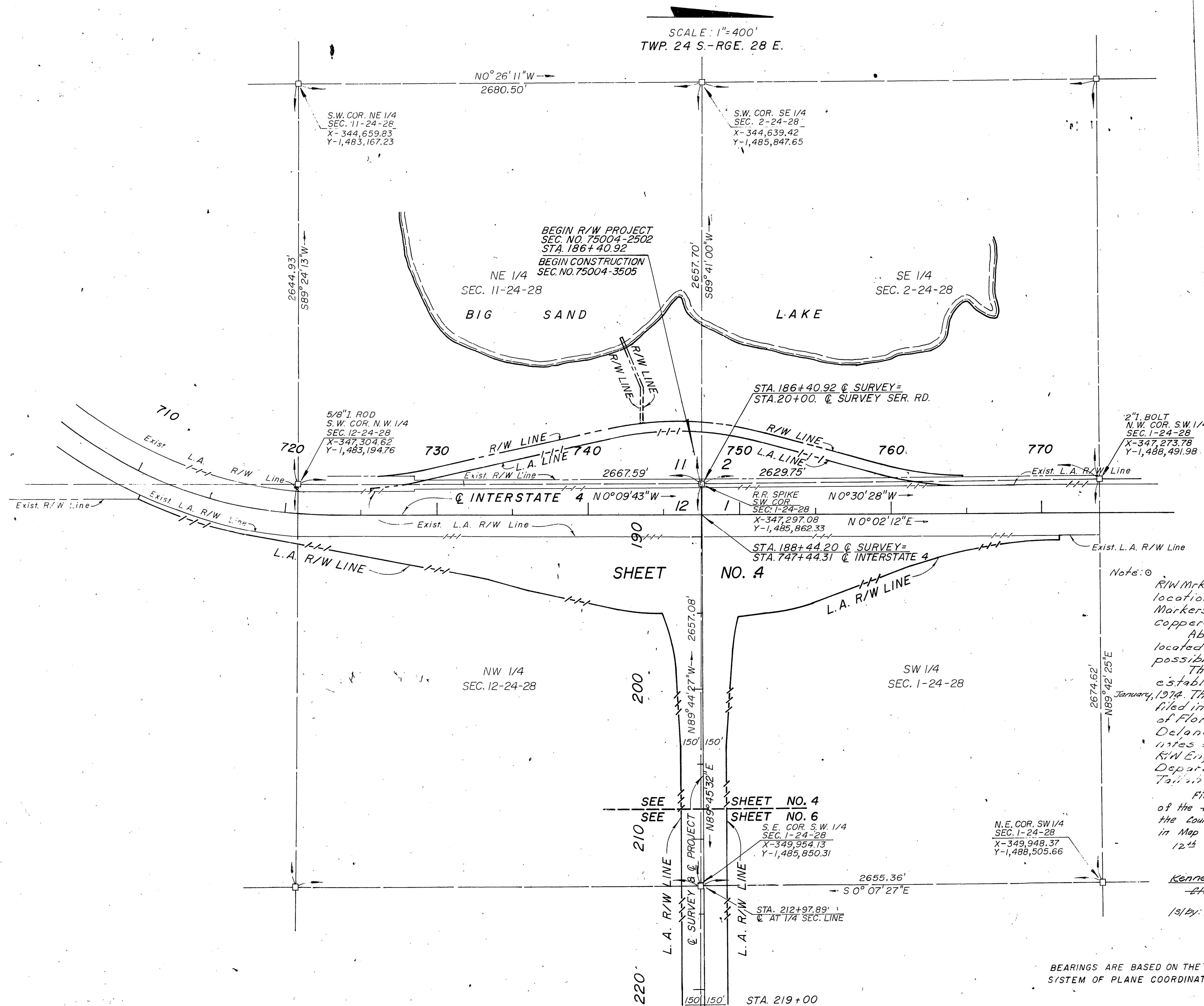


SECTION	CONTRACT	INTERSTATE 4	SHEET NO.
75004	2502	BEE LINE CONNECTOR	1 OF 10
By:			Date: 10-71
	STATE OF FLORIDA		

STATE ROAD 528



UTILITY OWNERS

- 1) FLORIDA POWER CORPORATION  
P.O. BOX 14042  
ST. PETERSBURG, FLORIDA 33733
- 2) ORLANDO UTILITIES COMMISSION  
P.O. BOX 3193  
ORLANDO, FLORIDA

Note: ① R/W Mks.--- These symbols denote the location of underground Permanent R/W Markers (P.R.W.M.). The P.R.W.M. are 5/8\" copper-coated rods. Above ground reference markers are located within 1' of the P.R.W.M., where possible.

The location of the P.R.W.M. were established by field survey in July, 1973 & January, 1974. The original field notes are filed in the District Office, State of Florida Department of Transportation, Deland, Florida. Copies of these notes are filed in the Office of R/W Engineering, State of Florida Department of Transportation, Tallahassee, Florida.

Filed for record in the Office of the County Comptroller for the County of Orange, State of Florida, in Map Book 3, Pages 108-111, on the 12<sup>th</sup> day of October, A.D. 1982.

County Comptroller  
Orange County, Florida

Filed for Record in the Office of the Clerk of the Circuit Court for the County of Orange, State of Florida, in Map Book 3, Page 16, on the 12<sup>th</sup> day of September, A.D. 1979.

Kenneth D. Kienth, County Comptroller  
Clerk of the Circuit Court  
Orange County, Florida  
19/By: D.H. Shook/eford, D.C.

BEARINGS ARE BASED ON THE FLORIDA STATE SYSTEM OF PLANE COORDINATES.

NO.	REVISION	BY	DATE
4	ADDED CONSTRUCTION CONTRACT	J.E.G.	F.J.R. 9-4-73
3	REVISED R/W LINE	J.E.G.	F.J.R. 8-3-72
2	REVISED LAKE SHORE LINE	J.E.G.	W.J.M. 5-24-72
1	REVISED L.A. R/W LINE	J.E.G.	F.J.R. 5-2-72

STATE OF FLORIDA  
DEPARTMENT OF TRANSPORTATION  
INTERSTATE 4-BEE LINE CONNECTOR

KEY MAP NOV 02 1989

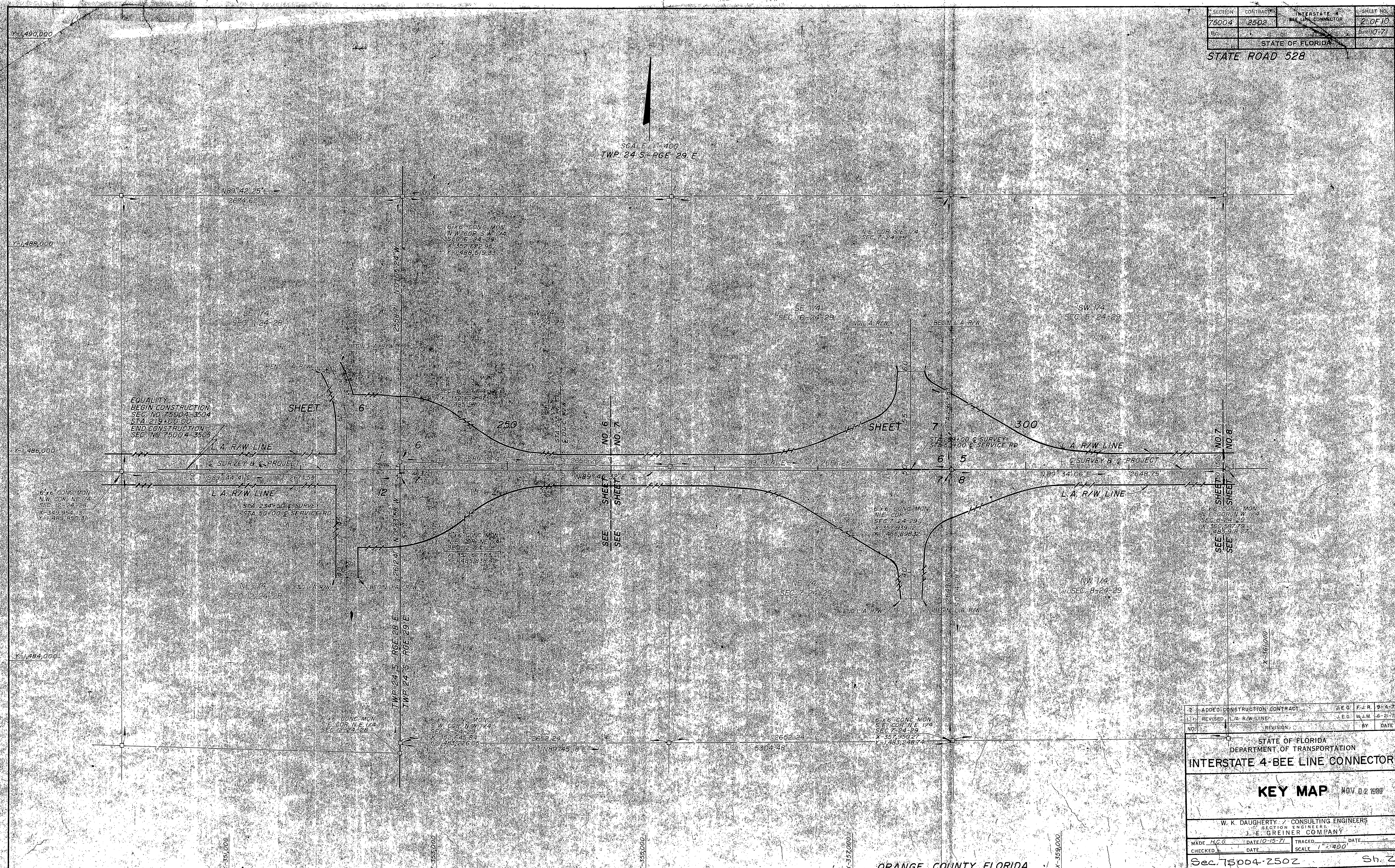
W. K. DAUGHERTY / CONSULTING ENGINEERS SECTION ENGINEERS J. E. GREINER COMPANY			
MADE H.C.G.	DATE 10-15-71	TRACED	DATE
CHECKED	DATE	SCALE 1" = 400'	
Sec. 75004-2502			Sh. 1



SECTION	CONTRACT	INTERSTATE 4	SHEET NO.
75004	2502	BEE LINE CONNECTOR	2 OF 10
DATE	DATE	DATE	DATE
		STATE OF FLORIDA	DATE 10-77

STATE ROAD 528

SCALE 1"=400'  
TWP. 24 S. RGE. 29 E



2 - ADDED CONSTRUCTION CONTRACT	W.E.G. F.J.R. 9-4-73
1 - REVISED L.A. R/W LINE	J.E.G. W.J.M. 6-21-72
NO. 1	REVISION
NO. 1	BY DATE

STATE OF FLORIDA  
DEPARTMENT OF TRANSPORTATION  
INTERSTATE 4-BEE LINE CONNECTOR

KEY MAP NOV. 02 1988

W. K. DAUGHERTY, CONSULTING ENGINEERS  
J. E. GREINER COMPANY

MADE H.C.G. DATE 10-75-77 TRACED DATE  
CHECKED DATE SCALE 1"=400'

Sec. 75004-2502 Sh. 2

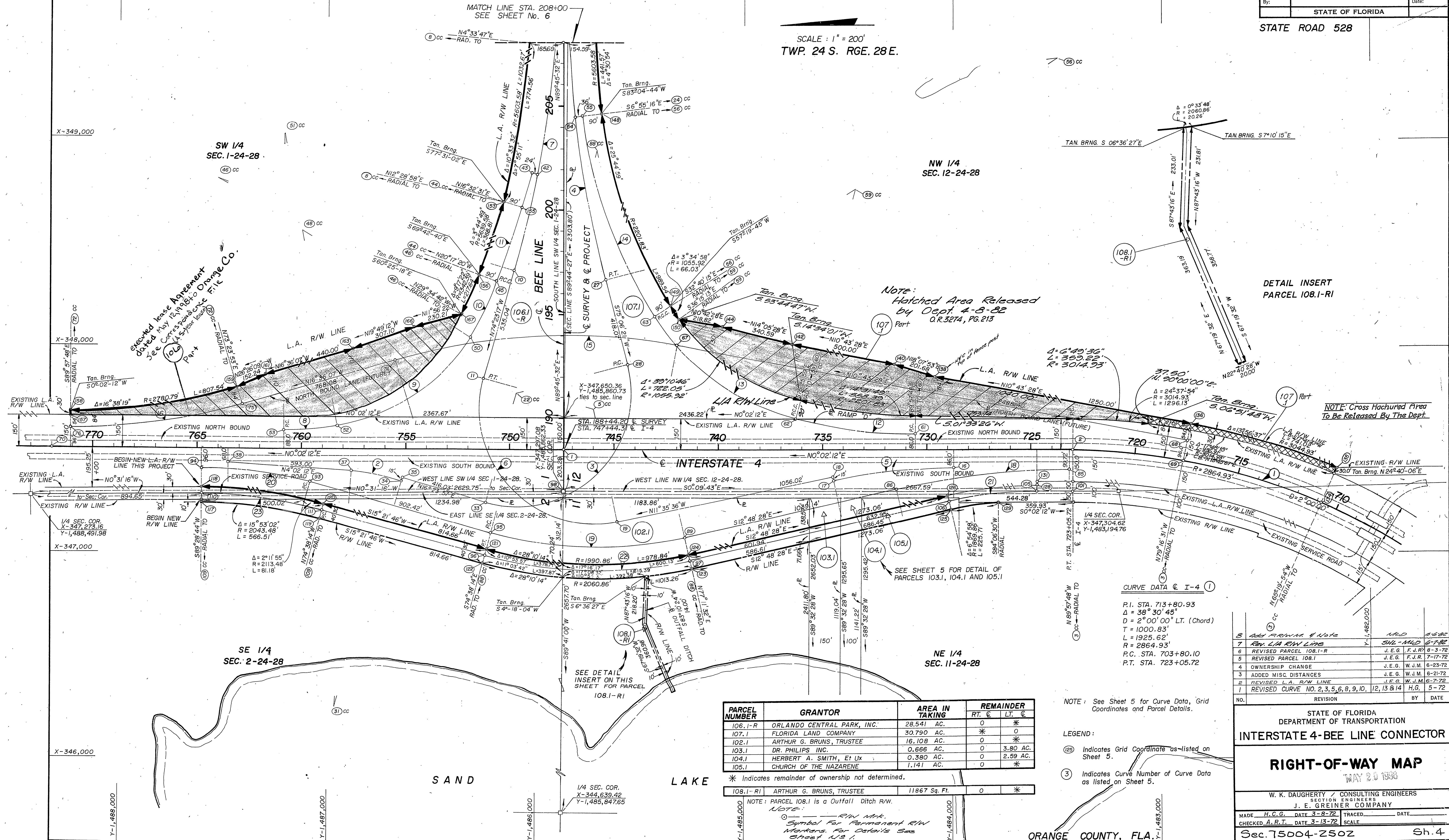
ORANGE COUNTY, FLORIDA







STATE ROAD 528

SCALE: 1" = 200'  
TWP. 24 S. RGE. 28 E.STATE OF FLORIDA  
DEPARTMENT OF TRANSPORTATION  
INTERSTATE 4-BEE LINE CONNECTOR

RIGHT-OF-WAY MAP

W. K. DAUGHERTY / CONSULTING ENGINEERS  
SECTION ENGINEERS  
J. E. GREINER COMPANYMADE H.C.G. DATE 3-8-72 TRACED DATE  
CHECKED A.R.T. DATE 3-13-72 SCALE  
Sec. 75004-2502 Sh. 4



STATE ROAD 528

RAMP COORDINATE CONTROL						
BASE LINE	CV. NO.	CONTROL POINT	STATION	COORDINATES		NO.
				X	Y	
I-4	1	CENTER	—	344,633.873	1,483,426.436	3
I-4	1	P.I.	713+80.93	347,498.162	1,482,423.774	
I-4	1	P.C.	703+80.10	346,874.521	1,481,641.130	
I-4	1	P.T.	723+05.72	347,498.802	1,483,424.602	2
RAMP "A"	2	CENTER	—	346,248.579	1,486,966.481	
RAMP "A"	2	P.I.	575+23.32	347,382.915	1,486,762.016	
RAMP "A"	2	P.C.	573+99.21	347,391.651	1,486,885.814	37
RAMP "A"	2	P.T.	576+46.46	347,347.876	1,486,642.956	34
RAMP "A"	3	CENTER	—	347,772.434	1,486,084.338	
RAMP "A"	3	P.I.	590+40.44	346,968.705	1,485,301.449	
RAMP "A"	3	P.C.	580+62.49	347,244.810	1,486,239.619	33
RAMP "A"	3	P.T.	592+26.82	347,913.604	1,485,552.819	28
RAMP "A"	4	CENTER	—	349,790.536	1,480,123.202	
RAMP "A"	4	P.I.	603+81.52	349,029.753	1,485,849.627	
RAMP "A"	4	P.C.	596+44.89	348,317.828	1,485,660.276	27
RAMP "A"	4	P.T.	611+10.20	349,766.429	1,485,852.728	26
RAMP "B"	5	CENTER	—	344,548.378	1,483,995.273	
RAMP "B"	5	P.I.	466+78.09	347,413.352	1,484,285.184	
RAMP "B"	5	P.C.	463+86.34	347,413.166	1,483,993.440	16
RAMP "B"	5	P.T.	469+67.84	347,354.720	1,484,580.995	17
RAMP "B"	6	CENTER	—	347,695.971	1,485,719.014	5
RAMP "B"	6	P.I.	489+25.00	346,976.094	1,486,491.239	
RAMP "B"	6	P.C.	480+23.86	347,157.192	1,485,608.483	19
RAMP "B"	6	P.T.	491+48.95	347,843.988	1,486,248.782	11
RAMP "B"	7	CENTER	—	349,901.242	1,491,622.923	
RAMP "B"	7	P.I.	504+81.74	349,127.608	1,486,880.040	
RAMP "B"	7	P.C.	496+83.99	348,359.286	1,486,104.733	10
RAMP "B"	7	P.T.	512+69.30	349,925.353	1,486,893.396	20
RAMP "C"	8	CENTER	—	349,021.619	1,487,209.246	
RAMP "C"	8	P.I.	29+99.46	347,589.141	1,487,879.073	
RAMP "C"	8	P.C.	28+68.37	347,689.225	1,487,210.162	53
RAMP "C"	8	P.C.C.	31+29.82	347,612.853	1,486,950.146	52
RAMP "C"	9	CENTER	—	348,552.030	1,487,122.879	
RAMP "C"	9	P.I.	35+49.91	347,688.842	1,486,636.986	
RAMP "C"	9	P.C.C.	31+29.82	347,612.853	1,486,950.146	52
RAMP "C"	9	P.C.C.	39+21.33	348,044.754	1,486,313.629	50
RAMP "C"	10	CENTER	—	348,805.668	1,487,527.403	
RAMP "C"	10	P.T.	40+69.34	348,120.162	1,486,235.204	
RAMP "C"	10	P.C.C.	39+21.33	348,044.754	1,486,313.629	50
RAMP "C"	10	P.C.C.	42+16.30	348,308.980	1,486,183.881	45
RAMP "C"	11	CENTER	—	350,295.732	1,491,557.974	
RAMP "C"	11	P.I.	44+91.51	348,567.117	1,486,088.449	
RAMP "C"	11	P.C.C.	42+16.30	348,308.980	1,486,183.881	45
RAMP "C"	11	P.T.	47+66.30	348,833.210	1,486,018.200	43
RAMP "D"	12	CENTER	—	349,871.145	1,484,765.562	
RAMP "D"	12	P.I.	73+51.37	347,579.471	1,484,470.202	
RAMP "D"	12	P.C.	70+59.20	347,579.284	1,484,780.028	61
RAMP "D"	12	P.C.C.	76+40.41	347,652.956	1,484,752.983	62
RAMP "D"	13	CENTER	—	348,762.035	1,484,464.773	
RAMP "D"	13	P.I.	80+89.05	347,765.794	1,485,187.202	
RAMP "D"	13	P.C.C.	76+40.41	347,652.956	1,484,752.983	61
RAMP "D"	13	P.C.C.	84+95.65	348,143.454	1,485,429.386	63
RAMP "D"	14	CENTER	—	349,380.616	1,483,500.159	
RAMP "D"	14	P.I.	90+19.49	348,584.419	1,485,712.184	
RAMP "D"	14	P.C.C.	84+95.65	348,143.454	1,485,429.386	63
RAMP "D"	14	P.T.	95+25.64	349,104.444	1,485,775.289	65
N.B.L.	15	CENTER	—	345,191.394	1,485,853.476	
N.B.L.	15	P.I.	849+56.11	348,135.738	1,486,004.626	
N.B.L.	15	P.C.	842+59.70	348,006.143	1,485,320.376	67
N.B.L.	15	P.T.	856+26.02	347,936.757	1,486,672.009	74
N.B.L.	16	CENTER	—	350,462.663	1,488,226.598	
N.B.L.	16	P.I.	868+13.00	347,597.608	1,487,809.517	
N.B.L.	16	P.C.	863+94.09	347,717.302	1,487,408.065	75
N.B.L.	16	P.T.	872+26.02	347,597.876	1,488,228.431	76
S.B.L.	17	CENTER	—	344,633.873	1,483,426.436	
S.B.L.	17	P.I.	323+12.35	347,402.806	1,483,431.257	
S.B.L.	17	P.C.C.	323+05.72	347,402.802	1,483,424.664	168
S.B.L.	17	P.C.C.	323+18.98	347,402.778	1,483,437.923	85
S.B.L.	18	CENTER	—	343,583.093	1,483,422.077	
S.B.L.	18	P.I.	327+39.67	347,401.033	1,483,858.611	
S.B.L.	18	P.C.C.	323+18.98	347,402.778	1,483,437.923	85
S.B.L.	18	P.T.	331+56.98	347,307.774	1,484,268.834	86
S.B.L.	19	CENTER	—	348,939.757	1,485,705.502	88
S.B.L.	19	P.I.	346+75.32	346,971.186	1,485,749.404	
S.B.L.	19	P.C.	341+96.12	347,077.416	1,485,282.123	89

RAMP COORDINATE CONTROL						
BASE LINE	CV. NO.	CONTROL POINT	STATION	COORDINATES		NO.
				X	Y	
S.B.L.	19	P.T.	351+35.14	347,098.142	1,486,211.483	95
S.B.L.	20	CENTER	—	345,495.606	1,487,587.637	
S.B.L.	20	P.I.	362+94.53	347,405.301	1,487,329.444	
S.B.L.	20	P.C.	360+37.56	347,337.221	1,487,081.654	93
S.B.L.	20	P.T.	365+48.43	347,405.465	1,487,586.415	94
SERVICE RD	21	CENTER	—	345,389.050	1,483,592.755	
SERVICE RD	21	P.I.	226+87.49	347,299.046	1,483,806.508	
SERVICE RD	21	P.C.	224+72.52	347,298.909	1,483,691.533	105
SERVICE RD	21	P.T.	229+00.67	347,251.391	1,484,016.134	106
SERVICE RD	22	CENTER	—	348,939.757	1,485,705.502	88
SERVICE RD	22	P.I.	246+80.78	348,856.774	1,485,751.954	
SERVICE RD	22	P.C.	241+73.73	348,969.178	1,485,257.517	97
SERVICE RD	22	P.T.	251+67.33	348,991.109	1,486,240.891	96
SERVICE RD	23	CENTER	—	345,197.905	1,487,578.424	
SERVICE RD	23	P.I.	262+72.65	347,283.945	1,487,305.723	
SERVICE RD	23	P.C.	259+81.99	347,206.939	1,487,026.444	110
SERVICE RD	23	P.T.	265+59.59	347,281.301	1,487,597.375	110

RIGHT-OF-WAY AND LIMITED ACCESS  
RIGHT-OF-WAY COORDINATE CONTROL

COORDINATES			
X	Y		NO.
347,500.363	1,485,863.191		1
349,921.242	1,491,622.923		8
344,548.378	1,483,995.273		14
347,369.414	1,484,274.008		8
347,772.434	1,486,084.338		22
349,790.536	1,480,123.202		24
346,248.579	1,486,966.481		31
347,362.265	1,486,638.722		35
347,433.396	1,487,477.347		38
349,928.748	1,485,894.625		42
350,295.732	1,491,557.974		44
348,805.668	1,487,527.403		46
349,552.030	1,487,122.879		48
349,021.619	1,487,209.246		51
349,100.107	1,485,811.027		54
349,380.616	1,483,500.159		56
348,762.035	1,484,464.773		59
349,841.115	1,484,176.562		60
345,191.394	1,485,853.476		65
347,543.045	1,486,675.446		68
347,448.782	1,482,893.310		69
347,584.434	1,486,318.880		70
350,462.663	1,488,226.598		72
348,584.361	1,483,372.666		84
345,495.606	1,487,587.637		91
347,297.384	1,485,862.334		98
347,501.806	1,486,118.881		99
347,276.556	1,489,119.025		100
345,388.943	1,483,425.952		102
345,389.018	1,483,542.385		104
345,197.978	1,487,570.354		109
347,298.802	1,483,424.363		112
347,280.313	1,487,706.100		113
347,241.376	1,487,588.941		117
347,168.408	1,487,028.847		119
347,235.905	1,487,010.298		120
346,952.449	1,486,243.019		121
347,019.947	1,486,224.470		122
346,926.942	1,485,253.954		123
346,995.305	1,485,268.999		124
347,215.175	1,483,944.288		125
347,428.877	1,483,541.195		127
347,328.878	1,483,541.146		128
347,249.000	1,483,734.317		129
347,237.352	1,482,230.744		134
347,400.925	1,482,156.618		135
347,625.618	1,482,859.814		136
347,858.226	1,484,087.981		138
347,920.990	1,484,279.649		140
348,014.033	1,484,770.915		142
348,096.953	1,485,101.254		144

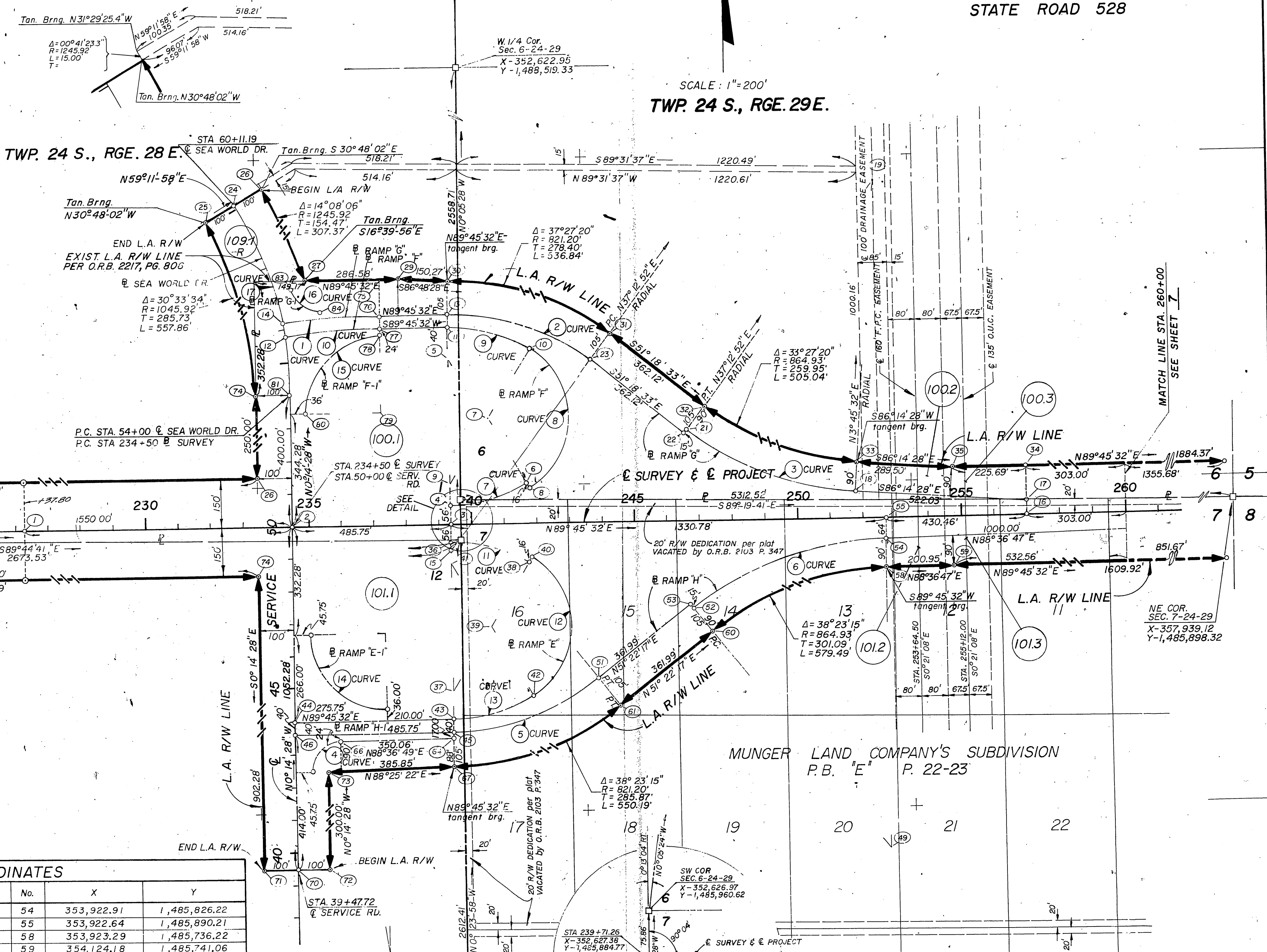
Continued

CURVE														DATA			
CURVE	RAMP	P.I.	STA	A	pc, arc def	L	R	P.C.	STA	P.C.C.	STA	P.T.	STA	Q			
1	I-4	713+80.93	38°30'45" LT	2°00'00"	1000.83	1925.82	2864.93	703+80.10				723+05.72	052' / FT				
2	A	575+23.32	2°21'45" RT	5°00'00"	124.13	247.25	1145.92	573+99.21				576+46.46	073' / FT				
3	A	590+40.44	12°31'7"36" LT	10°25'03"	377.96	1164.33	550.00	580+62.49				592+26.82	100' / FT				
4	A	603+81.52	14°39'41" RT	1°00'00"	736.68	1463.31	5729.58	596+44.89				611+10.20	039' / FT				
5	B	466+78.09	1°37'48" LT	2°00'00"	291.75	581.50	2864.79	463+86.34				469+67.84	042' / FT				
6	B	489+25.00	1°7'12'19" RT	10°25'03"	391.44	1125.09	550.00	480+23.86				481+48.95	1010' / FT				
7	B	504+81.74	18°51'19" LT	1°00'00"	737.75	1585.31	5729.58	486+83.99				512+69.30	039' / FT				
8	C	29+99.46	10°27'29" LT	4°00'00"	31.69	261.45	1432.39	28+68.37	31+29.82				073' / FT				
9	C	35+49.91	2°7'29'12" LT	6°00'00"	420.09	791.51	954.93	31+29.82	38+21.33				092' / FT				
10	C	40+69.34	1°47'56" LT	4°00'00"	148.01	294.97	1432.39	39+21.33	42+16.30				073' / FT				
11	C	44+91.51	12°31'32" LT	3°00'00"	275.21	550.00	5729.58	42+16.30				47+66.30	039' / FT				
12	D	73+51.37	14°31'39" RT	2°30'00"	292.77	581.11	2291.83	76+59.20				76+40.41	051' / FT				
13	D	80+89.05	42°24'44" RT	5°00'00"	448.64	855.24	1145.92				76+40.41	84+56.65	084' / FT				
14	D	89+89.49	25°45'00" RT	20°30'00"	523.84	1029.99	2291.83				84+56.65	95+25.64	091' / FT				
15	NBL	849+56.11	27°15'15" LT	28°00'00"	696.47	1366.32	2864.79	842+59.70				856+26.02	074' / FT				
16	NBL	868+13.00	6°38'19" RT	2°00'00"	418.31	831.93	2864.79	863+94.09				872+26.02	074' / FT				
17	SBL	923+12.35	10°16'28" LT	2°30'00"	466.3	932.8	2768.93				323+05.72	323+18.98	052' / FT				
18	SBL	927+9.67	12°34'12" LT	3°00'00"	440.63	838.00	3819.72				323+18.98	331+56.98	055' / FT				
19	SBL	936+75.32	28°01'34" RT	3°00'00"	279.20	939.02	1909.86	341+96.12				351+35.14	094' / FT				
20	SBL	964+55.63	18°19'30" RT	3°00'00"	256.97	510.87	1909.86	360+37.66				366+48.83	094' / FT				
21	SERV RD	226+87.49	2°50'40" LT	1°00'00"	214.97	428.15	1909.86	224+72.62				229+00.67	040' / FT				
22	SERV RD	246+80.78	28°10'13" RT	2°00'00"	307.05	993.66	2020.88	241+73.93				251+67.33	037' / FT				
23	SERV RD	267+72.65	15°13'02" LT	2°30'00"	200.66	577.60	2083.48	265+59.99				265+59.99	037' / FT				



STATE ROAD 528

RAMP CURVE DATA										
CURVE	RAMP	R.I. STA.	Δ	Dc (arc def.)	T	L	R	P.C. STA.	P.C.C. STA.	P.T. STA.
1	G	84 + 31.34	8° 44' 18" LT.	2° 56' 18"	148.98'	297.37'	1949.86'	82 + 82.36		85 + 79.73
2	G	92 + 34.78	37° 45' 3" RT.	8° 00' 00"	245.05'	472.21'	716.20'	87 + 89.73		92 + 61.94
3	G	92 + 13.90	33° 46' 36" LT.	6° 00' 00"	289.92'	562.95'	954.93'	96 + 23.98		101 + 86.93
4	H	213 + 83.54	90° 00' 00" RT.	63° 39' 43"	90.11'	141.37'	90.20'	212 + 93.54		214 + 34.91
5	H	120 + 34.23	38° 23' 15" LT.	8° 00' 00"	249.32'	479.85'	716.20'	117 + 84.91		122 + 64.76
6	H	129 + 59.17	38° 23' 15" LT.	6° 03' 00"	332.42'	639.79'	954.93'	126 + 26.75		132 + 66.54
7	F	60 + 63.92	31° 08' 21" LT.	12° 27' 20"	128.17'	250.00'	460.00'	59 + 35.75	61 + 65.75	66 + 91.19
8	F	65 + 92.92	117° 43' 18" LT.	21° 13' 30"	407.17'	505.44'	240.00'	71 + 59.89	66 + 91.19	74 + 50.39
9	F	68 + 23.82	31° 08' 21" LT.	10° 59' 11"	132.63'	258.70'	476.00'	66 + 91.19	69 + 49.89	
10	F	73 + 05.42	5° 42' 54" LT.	3° 00' 20"	145.53'	290.50'	1909.86'	74 + 50.39		
11	E	10 + 63.92	31° 08' 21" RT.	12° 27' 20"	128.17'	250.00'	460.00'	9 + 75.35	11 + 85.75	16 + 91.19
12	E	15 + 92.92	117° 43' 18" RT.	21° 13' 30"	407.17'	505.44'	240.00'	16 + 91.19	19 + 49.89	
13	E	18 + 23.82	31° 08' 21" RT.	10° 59' 11"	132.63'	258.70'	476.00'	221 + 59.89	175 + 21.17	225 + 21.17
14	E-I	233 + 69.89	90° 00' 00" LT.	24° 54' 40"	230.00'	361.38'	230.00'	171 + 59.89	184 + 02.85	
15	F-I	173 + 89.89	90° 00' 00" LT.	63° 39' 43"	75.04'	125.10'	90.00'	182 + 77.75	60 + 11.19	
16	G-I	183 + 52.79	79° 38' 18" LT.	5° 00' 00"	313.05'	611.19'	1145.92'	54 + 00.00		
17	SEA WORLD DR	57 + 13.05	30° 33' 34" LT.							



GRID COORDINATES					
No.	X	Y	No.	X	Y
1	351,290.00	1,485,879.14	18	353,843.97	1,485,970.30
2	352,106.12	1,485,882.57	19	353,906.57	1,486,323.12
3	352,591.87	1,485,884.62	21	353,324.77	1,486,165.94
4	352,591.63	1,485,940.61	22	353,308.00	1,486,150.69
5	352,589.70	1,486,400.61	23	353,028.54	1,486,374.62
6	352,829.22	1,486,007.90	24	351,942.82	1,486,864.51
7	352,709.46	1,486,204.25	25	351,856.93	1,486,813.31
8	352,837.56	1,485,994.24	26	352,028.72	1,486,915.72
9	352,591.35	1,486,006.90	27	352,152.12	1,486,635.05
10	352,835.78	1,486,415.34	29	352,438.70	1,486,636.26
11	352,589.35	1,486,482.89	30	352,588.74	1,486,627.89
12	352,090.07	1,486,458.74	31	353,088.86	1,486,460.68
13	352,589.18	1,486,522.89	32	353,371.56	1,486,234.31
14	352,083.06	1,486,498.13	33	353,837.9	1,486,060.05
15	352,592.19	1,485,806.70	34	354,352.47	1,486,042.02
16	354,353.10	1,485,892.03	35	354,126.79	1,486,341.08
17	354,352.92	1,485,336.03	36	352,592.10	1,485,828.62

GRID COORDINATES					
No.	X	Y	No.	X	Y
37	352,594.04	1,485,368.62	54	353,922.91	1,485,826.22
38	352,30.25	1,485,763.34	55	353,922.64	1,485,890.21
39	352,712.15	1,485,65.8	58	353,923.29	1,485,736.22
40	352,338.47	1,485,777.07	59	354,124.18	1,485,741.06
41	352,392.38	1,485,762.34	60	353,386.98	1,485,546.99
42	352,840.24	1,485,355.96	61	353,104.19	1,485,321.01
43	352,594.38	1,485,286.34	64	352,594.62	1,485,229.34
44	352,108.64	1,485,294.30	65	352,244.56	1,485,244.87
45	352,594.55	1,485,246.34	66	352,244.66	1,485,220.87
46	352,108.81	1,485,244.30	67	352,594.99	1,485,141.34
47	352,591.54	1,485,962.54	70	352,110.55	1,484,830.30
49	353,926.93	1,484,871.29	71	352,110.55	1,484,829.88
50	353,644.14	1,484,645.32	72	352,210.55	1,484,330.72
51	353,038.64	1,485,403.03	73	352,209.29	1,485,130.72
52	353,330.79	1,485,617.29	74	352,004.44	1,486,282.15
53	353,321.43	1,485,629.01	75	352,378.70	1,486,636.00
			76	352,379.18	1,486,522.00
			77	352,379.35	1,486,362.01
			78	352,379.45	1,486,322.01
			79	352,330.42	1,486,228.01
			80	352,150.42	1,486,227.04
			81	352,104.44	1,486,282.57
			82	352,387.39	1,484,572.16
			83	352,105.17	1,408,602.23
			84	352,200.30	1,486,537.14

GRID COORDINATES FROM I-4 INTERCHANGE, SHEETS 3 AND 4					
8	349,901.24	1,491,622.92	55	349,104.44	1,485,775.29
20	349,925.35	1,485,893.40	56	349,380.62	1,483,500.16
26	349,766.42	1,485,852.73	147	349,555.28	1,485,721.84
24	349,790.54	1,480,123.20	148	349,115.29	1,485,685.95
54	349,100.11	1,485,811.03			

PARCEL NUMBER	GRANTOR	AREA IN TAKING	REMAINDER
100.1	MARTIN MARIETTA CORPORATION	160.66 AC.	* 0
101.1	FLORIDA LAND COMPANY	102.28 AC.	* 0
109.1-R	ORLANDO CENTRAL PARK, INC.	1.32 AC.	0 *
106.1-R	ORLANDO CENTRAL PARK, INC.	28.541 AC.	0 *
107.1	FLORIDA LAND COMPANY	30.790 AC.	* 0

REVISION			
NO.	REVISION	BY	DATE
1	Added Parcel 109.1	J.E.G.	6-23-72
2	Added Parcel 106.1 & 107.1	J.E.G.	6-21-72
3	Added Parcel 109.1	J.E.G.	6-7-72
4	Revised as of 12-9-71	H.G.	5-19-72

STATE OF FLORIDA  
DEPARTMENT OF TRANSPORTATION  
INTERSTATE 4-BEE LINE CONNECTOR

**RIGHT-OF-WAY MAP**

W. K. DAUGHERTY & CONSULTING ENGINEERS  
SECTION ENGINEERS  
J. E. GREINER COMPANY

MADE H.C.G. DATE 11-5-71 TRACED DATE  
CHECKED A.R.T. DATE 11-10-71 SCALE 1" = 200'

Sec. 75004-2502 Sh. 6

ORANGE COUNTY, FLA.

Rec'd. 11-3-82 MOC



STATE ROAD 528

GRID COORDINATES					
No.	X	Y	No.	X	Y
2	357,639.74	1,485,905.86	31	357,640.45	1,485,736.63
3	356,111.76	1,485,899.43	32	355,507.76	1,485,896.89
4	356,111.50	1,485,961.43	33	355,507.95	1,485,852.89
5	356,103.46	1,487,871.27	34	356,028.85	1,485,818.67
6	356,787.61	1,486,088.16	35	355,934.95	1,484,389.36
10	357,130.59	1,486,712.45	36	356,641.52	1,485,635.35
11	357,295.38	1,486,282.98	40	357,367.97	1,484,958.99
12	357,590.59	1,486,714.39	41	357,170.68	1,485,335.28
13	357,636.34	1,486,714.58	42	357,481.43	1,485,159.06
14	355,211.76	1,485,895.64	43	357,597.97	1,484,959.96
15	355,211.13	1,486,045.64	44	357,643.72	1,484,940.15
16	356,111.12	1,486,051.43	45	357,178.08	1,485,348.33
17	356,011.14	1,485,049.01	46	357,420.45	1,485,329.65
18	356,755.37	1,486,172.18	47	357,541.81	1,485,413.47
19	357,263.14	1,486,367.01	48	357,645.09	1,484,635.16
20	357,500.59	1,486,714.01	49	357,545.09	1,484,634.74
21	357,414.74	1,485,904.91	50	357,507.97	1,484,959.58
22	357,414.98	1,485,848.91	51	357,437.03	1,485,080.77
24	357,221.40	1,485,805.30	52	356,597.12	1,485,557.00
29	357,503.61	1,485,459.71	53	356,022.95	1,485,728.86
30	357,594.71	1,485,746.44	54	355,508.35	1,485,746.89

COORDINATES CONTINUED THIS SHEET

SEC. 6-24-29

SEC. 5-24-29

SEC. 8-24-29

DETAIL (NO SCALE)

RAMP CURVE DATA									
CURVE	RAMP	P.I. STA.	Δ	Dc (arc def.)	T	L	R	P.C. STA.	P.T. STA.
1	I	17+01.73	25°47'51"	4°00'00"	328.03'	644.93'	1432.39'	13+73.70	20+18.63
2	I	31+17.52	60°12'09"	24°54'36"	133.33'	241.67'	230.00'	29+84.19	32+25.86
3	I-I	67+61.23	50°17'51"	20°01'59"	134.27'	251.07'	286.00'	66+78.03	68+78.03
4	J	78+05.33	20°45'00"	3°00'00"	349.66'	691.67'	1909.86'	74+55.67	81+47.34
5	J	90+08.82	69°15'00"	12°27'18"	317.63'	555.97'	460.00'	86+91.19	92+47.16
6	K	98+74.81	60°12'09"	24°54'36"	133.33'	241.67'	230.00'	97+41.48	99+83.15
7	K	112+76.74	25°47'51"	4°00'00"	328.03'	644.93'	1432.39'	109+48.71	115+93.64
8	K-I	7+23.58	50°17'51"	20°01'59"	134.27'	251.07'	286.00'	5+89.31	8+40.38
9	L	130+37.81	69°15'00"	12°27'18"	317.63'	555.97'	460.00'	127+20.18	132+76.15
10	L	141+69.66	20°45'00"	3°00'00"	349.66'	691.67'	1909.86'	138+20.00	145+11.67
11	N	173+10.27	24°54'40"	12°27'18"	101.60'	200.00'	460.00'	172+08.67	174+08.67
12	N	183+97.87	36°55'24"	12°27'18"	153.57'	296.44'	460.00'	182+44.30	185+40.74
13	N	155+80.17	208°09'56"	24°54'40"	Inf.	835.63'	230.00'	154+26.60	157+23.04
14	M	166+60.27	24°54'40"	12°27'18"	101.60'	200.00'	460.00'	165+58.67	167+58.67

GRID COORDINATES					
No.	X	Y	No.	X	Y
55	355,734.08	1,485,747.84	85	359,771.72	1,485,914.83
57	359,167.99	1,485,850.29	86	359,771.54	1,485,958.83
58	359,176.03	1,483,940.45	87	359,250.63	1,485,993.05
59	358,491.87	1,485,723.56	88	359,344.54	1,487,422.36
62	358,148.89	1,485,099.26	89	358,637.97	1,486,176.37
63	357,984.11	1,485,528.74	92	357,911.51	1,486,852.73
64	357,688.90	1,485,097.33	93	358,108.80	1,486,476.44
65	357,643.15	1,485,097.14	94	357,798.06	1,486,652.66
66	360,067.72	1,485,916.08	95	357,681.51	1,486,851.76
67	360,068.35	1,485,766.08	96	357,635.76	1,486,851.56
68	359,168.37	1,485,760.29	97	358,101.40	1,486,463.39
69	359,268.35	1,485,762.71	98	357,859.04	1,486,482.07
70	358,524.11	1,485,639.53	99	357,637.67	1,486,398.24
71	358,016.35	1,485,444.71	100	357,634.40	1,487,176.56
72	357,778.89	1,485,097.71	101	357,534.40	1,487,176.14
73	357,745.09	1,484,635.58	102	357,734.40	1,487,176.98
74	357,864.74	1,485,906.81	103	357,771.51	1,486,852.14
75	357,864.50	1,485,962.80	104	357,842.45	1,486,730.94
77	358,058.08	1,486,006.42	105	358,682.36	1,486,254.65
78	357,960.33	1,486,214.61	106	359,256.53	1,486,082.86
82	357,775.87	1,486,352.01	107	359,771.09	1,486,064.83
83	357,684.78	1,486,075.28	108	359,545.41	1,486,063.88
84	357,639.03	1,486,075.08	109	357,510.61	1,486,851.03

NOTE: R/W Mkt. Symbol for Permanent R/W Markers. For Details See Sheet No. 1.

ORANGE COUNTY, FLA.

STATE OF FLORIDA  
DEPARTMENT OF TRANSPORTATION  
INTERSTATE 4-BEE LINE CONNECTOR

RIGHT-OF-WAY MAP

W. K. DAUGHTERY / CONSULTING ENGINEERS  
SECTION ENGINEERS  
J. E. GREINER COMPANY

MADE H.C.G. DATE 10-28-71 TRACED DATE  
CHECKED A.R.T. DATE 10-31-71 SCALE 1" = 200'  
Sec. 75004-2502 Sh. 7



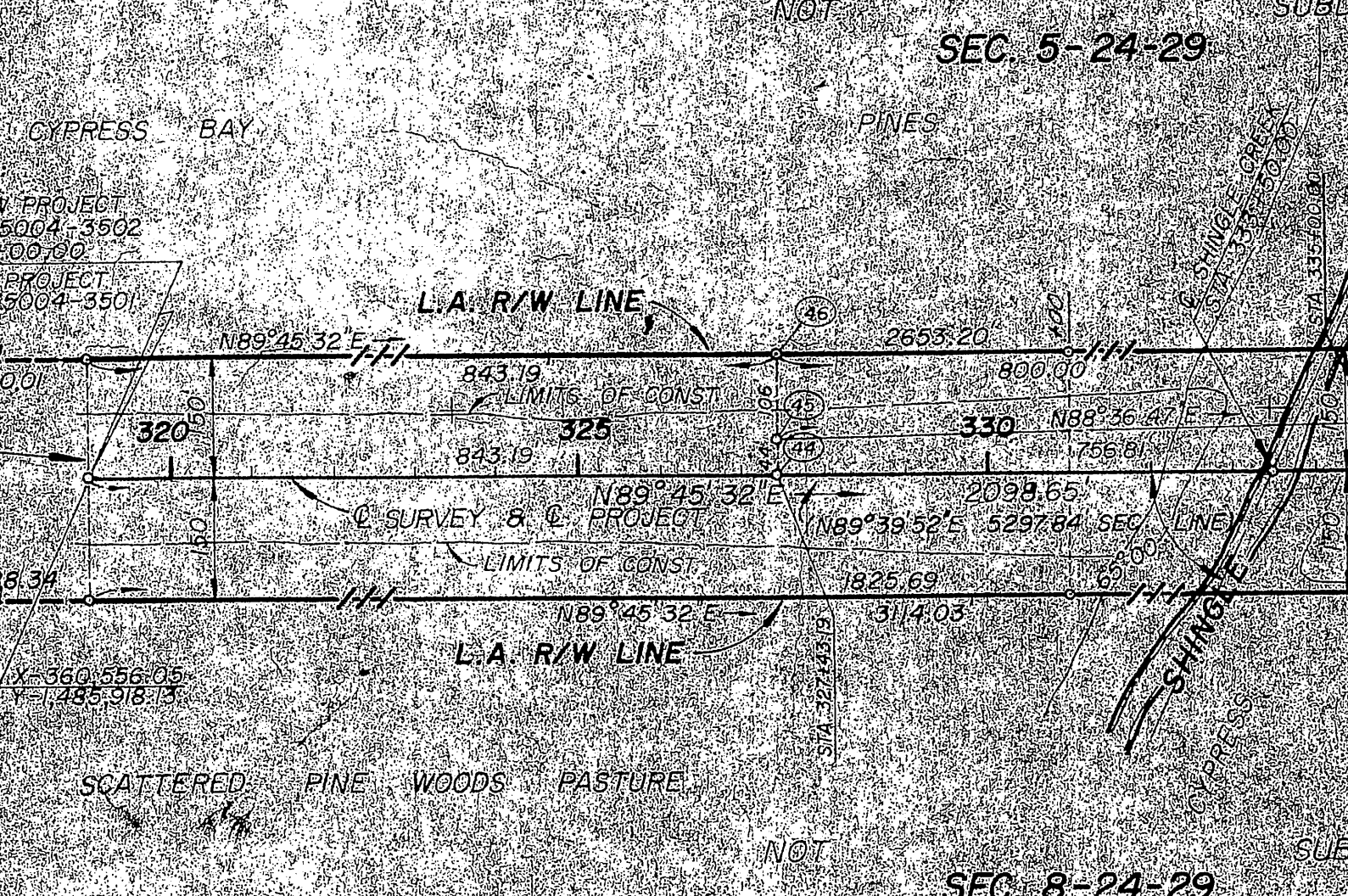
STATE ROAD 528

GRID COORDINATES					
No.	X	Y	No.	X	Y
1	362,654.68	1,485,926.96	66	364,404.31	1,485,103.24
2	363,054.48	1,485,937.95	69	364,540.00	1,485,198.36
3	365,246.45	1,487,236.57	70	364,268.62	1,485,827.53
4	365,448.15	1,487,581.91	71	364,080.00	1,486,197.94
5	362,842.57	1,488,794.90	72	364,020.00	1,486,197.81
6	364,020.03	1,488,163.27	73	364,304.94	1,485,727.40
7	363,881.74	1,488,125.22	74	364,021.04	1,485,726.40
8	363,851.42	1,488,171.41	75	364,538.03	1,485,760.43
9	363,885.34	1,488,147.01	76	364,541.53	1,485,745.23
10	363,679.95	1,488,376.54	79	364,432.07	1,485,260.22
11	363,859.98	1,488,519.68	80	364,295.04	1,485,813.80
12	363,959.92	1,486,234.42	81	364,082.07	1,485,259.84
13	364,019.92	1,486,234.85	82	364,022.07	1,485,259.20
14	363,879.32	1,486,662.54	83	364,697.50	1,485,316.80
15	364,018.91	1,486,663.29	86	365,276.82	1,487,189.62
16	363,490.28	1,486,650.80	88	367,533.12	1,485,389.08
17	363,480.33	1,486,801.83	89	365,156.63	1,486,368.83
18	362,594.66	1,487,081.62	90	364,824.34	1,486,313.95
19	363,085.43	1,486,251.92	91	365,573.40	1,489,109.29
20	362,398.95	1,485,989.89	92	365,231.48	1,486,333.95
21	363,437.72	1,487,231.63	93	365,432.32	1,487,227.63
22	363,957.72	1,487,232.85	94	364,309.82	1,486,288.21
23	363,802.79	1,486,887.54	95	364,757.78	1,485,889.05
24	364,017.72	1,486,232.98	96	364,597.89	1,485,666.73
25	363,867.72	1,487,232.65	97	364,337.12	1,486,338.35
26	364,017.05	1,487,532.98	98	364,752.07	1,485,259.53
27	363,907.05	1,487,532.73	99	364,022.73	1,484,959.81
28	364,016.39	1,487,832.98	100	364,332.73	1,484,859.45
29	363,906.39	1,487,832.73	101	363,912.73	1,484,859.86
30	363,743.10	1,486,954.90	102	364,733.03	1,484,823.01
31	363,025.74	1,486,319.28	103	364,464.20	1,485,241.91
32	362,395.57	1,486,079.89	110	365,570.91	1,487,803.81
33	361,399.23	1,485,921.68	111	365,532.41	1,487,825.11
34	361,389.04	1,485,965.68	112	365,218.32	1,487,338.42
35	361,399.60	1,485,971.68	113	364,255.36	1,487,361.73
36	362,198.59	1,486,1075.05	114	364,673.86	1,486,334.94
37	362,156.03	1,485,924.87	115	364,464.61	1,486,428.47
38	362,156.12	1,485,980.87	116	364,387.84	1,487,176.86

COORDINATES CONTINUED THIS SHEET

SCALE 1"=200'  
TWP 24 S. RGE 29 E

CURVE DATA AT  
NO. OF PROJECT SPIRAL  
P.C. STA 358+40.93  
D=160' 48" 20' 11"  
D=2' 00' 00"  
P=2854.79  
L=500'  
C=4' 00"  
T=682.36  
LC=2640.28  
X=399.81  
Y=31.31  
T=3539+98.68  
P=229.33  
SC STA 348+98.68  
X=198.96  
Y=674+370+58.93  
C=1866.72  
ST STA 374+36.93  
ST=183.40  
SE=0.0800/FI



RAMP CURVE DATA									
CURVE	RAMP	P.I. STA	Δ	D <sub>0</sub> (arc def)	T	L	R	P.C. STA	P.O.V. STA
3	A	33+09.63	86°06'53"	18°28'57"	289.66	465.92	210.00	20+18.37	24+84.49
4	B	71+35.91	41°18'07"	5°30'30"	392.62	750.94	1041.74	67+43.19	74+94.13
5	B	86+60.19	48°35'00"	12°27'20"	207.62	390.05	460.00	84+52.57	88+12.62
6	B-1	311+29.87	41°25'00"	20°02'01"	108.12	206.74	285.00	304+21.78	324+28.49
7	C	98+50.59	72°53'56"	18°28'57"	228.96	394.42	310.00	96+21.63	100+16.05
8	C	102+15.55	38°23'42"	10°00'00"	199.50	383.95	572.96	100+16.05	104+00.00
9	C	101+68.20	35°37'35"	5°00'00"	368.20	712.53	1145.32	104+00.00	111+12.53
10	D	144+08.43	15°06'30"	2°00'00"	379.92	755.42	2864.79	140+28.51	147+83.93
11	D	133+00.61	43°30'00"	18°58'20"	120.48	229.28	302.00	133+80.13	136+09.41
12	D	124+03.72	62°15'00"	14°19'26"	241.53	434.59	400.00	126+62.19	130+96.78
13	D-1	121+10.93	27°45'00"	20°02'01"	69.32	139.52	285.00	122+11.61	123+80.13
14	E	159+87.73	38°21'40"	12°27'20"	160.01	307.98	460.00	159+27.72	161+35.70
15	E	171+51.60	22°45'55"	24°54'40"	Inf	914.30	230.00	161+35.70	170+50.00
16	F	171+51.60	24°54'40"	12°27'20"	101.60	200.00	460.00	170+50.00	172+50.00
17	F	186+75.75	32°52'58"	12°27'20"	135.75	264.00	460.00	185+40.00	188+04.00
18	F	209°50'25"	24°54'40"	Inf	842.35	230.00	188+04.00	196+46.35	200+77.65
19	F	198+79.32	53°43'14"	12°27'20"	232.97	431.30	460.00	196+46.35	200+77.65

GRID COORDINATES					
No.	X	Y	No.	X	Y
119	364,297.34	1,485,480.37	120	364,077.84	1,487,176.18
121	363,671.92	1,485,781.29	122	364,017.84	1,487,176.05
123	364,021.60	1,485,472.64	124	364,126.39	1,487,833.22
125	364,023.03	1,484,822.77	126	364,127.05	1,487,833.22
127	363,913.03	1,484,822.53	128	364,167.84	1,487,176.38
129	363,871.60	1,485,472.44	130	364,323.61	1,488,368.45
131	363,666.02	1,485,691.48	132	364,640.99	1,488,378.77
133	362,382.35	1,485,775.82	134	365,141.40	1,487,387.38
135	364,171.69	1,486,194.04	136	365,489.86	1,487,876.42
137	364,381.01	1,485,784.43	138	365,330.41	1,487,678.95
139	364,427.61	1,485,242.06			

PARCEL NUMBER	GRANTOR	AREA IN TAKING	REMAINDER
100.1	MARTIN MARIETTA CORPORATION	160.66 AC.	*
101.1	FLORIDA LAND COMPANY	102.28 AC.	*

STATE OF FLORIDA  
DEPARTMENT OF TRANSPORTATION  
INTERSTATE 4-BEE LINE CONNECTOR

**RIGHT-OF-WAY MAP**

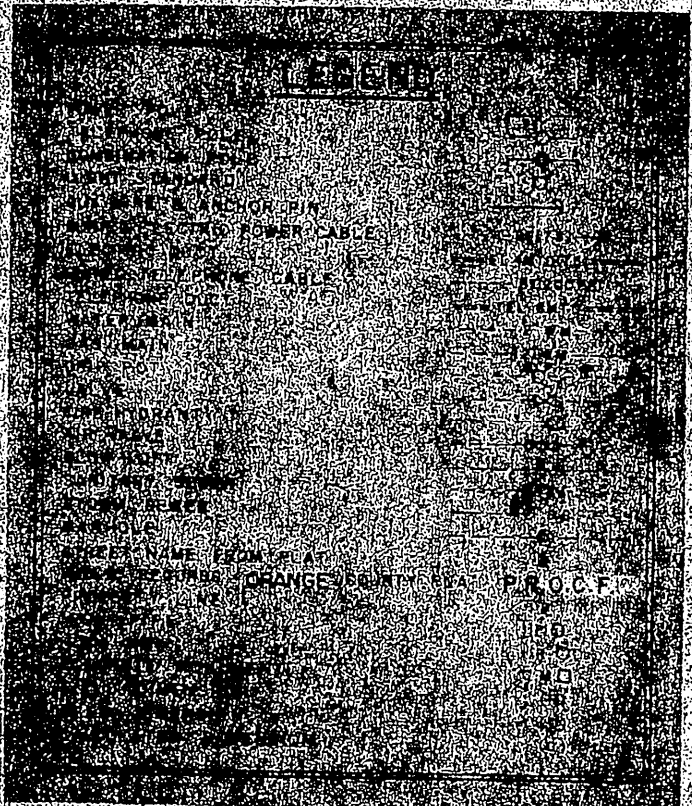
W. K. DAUGHTERY, CONSULTING ENGINEERS  
J. E. GREINER, ENGINEER

MADE H.C.G. DATE 10-15-71  
CHECKED A.R.T. DATE 10-21-71

ORANGE COUNTY, FLA.



GRID COORDINATES					
No.	X	Y	No.	X	Y
9	368,529.52	1,490,296.01	24	372,164.10	1,495,470.61
12	368,232.52	1,490,344.88	28	370,280.82	1,490,833.53
13	368,447.11	1,490,106.58	88	370,307.06	1,486,183.56
14	368,540.57	1,490,299.64	109	365,702.17	1,487,731.19
22	368,750.72	1,490,367.63	110	368,370.91	1,487,803.81
23	368,890.00	1,490,407.42	128	365,439.66	1,487,876.42



LEGEND

- (10) Indicates Curve Number
- (20) Indicates Coordinate Number
- (100) Indicates corner Section or 1/4 Section corner
- (100) Indicates Parcel Number

CURVE No. 2 DATA AT  
E. OF PROJECT  
P.I. STA 399+82.79  
A = 35° 52' 10" RT  
Dc = 1° 03' 30.79"  
R = 5412.65  
T = 2296.26  
L = 4333.22  
P.C. STA 376+32.63  
P.T. STA 420+26.75 BK  
STA 421+40.26 AHD

PARCEL NUMBER	GRANTOR	AREA IN TAKING	REMAINDER	
			RT. E	LT. E
100	MARTIN MARIETTA CORPORATION	160.66 AC.	*	*
101-1	FLORIDA LAND COMPANY	102.28 AC.	*	0

\* Indicates Remainder not shown when ownership encompasses area too large to be shown at this scale.

1. Add P.R.s		T.C.	11-2-71
2. R.F.M.S. & Note		L.W.	5-13-71
3. Revised Acreage Parcel 100-1		J.E.G.	5-19-72
4. Revised as of 12-9-71		H.G.	
NO.	REVISION	BY	DATE

STATE OF FLORIDA  
DEPARTMENT OF TRANSPORTATION  
INTERSTATE 4-BEE LINE CONNECTOR

RIGHT-OF-WAY MAP

W. K. DAUGHERTY CONSULTING ENGINEERS  
SECTION ENGINEER  
J. E. GREINER COMPANY

MADE H.C.G. DATE 10-18-71 TRACED DATE  
CHECKED A.R.T. DATE 10-22-71 SCALE 1" = 200'

Sec 75004-2502 Sh. 9

ORANGE COUNTY, FLORIDA



## DESCRIPTION

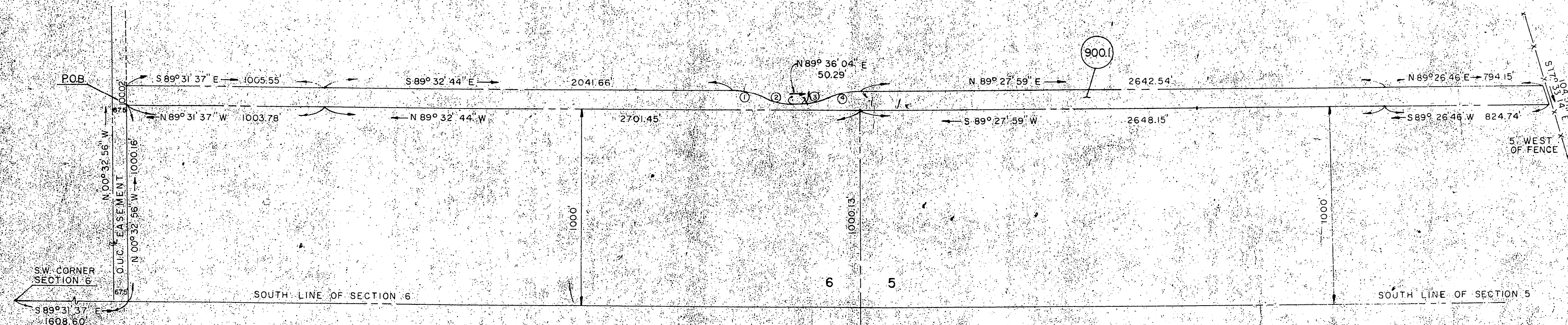
BORROW PIT NO. 1

FROM THE SOUTHWEST CORNER OF SECTION 6, TOWNSHIP 24 SOUTH, RANGE 29 EAST, RUN SOUTH 89 DEGREES 31 MINUTES 37 SECONDS EAST 1608.60 FEET ALONG THE SOUTH BOUNDARY OF THE SOUTHWEST 1/4 OF SAID SECTION 6 TO A POINT ON THE EAST RIGHT OF WAY LINE OF THE ORLANDO UTILITIES COMMISSION TRANSMISSION LINE EASEMENT; THENCE NORTH 00 DEGREES 32 MINUTES 56 SECONDS WEST 1000.16 FEET ALONG THE SAID EAST RIGHT OF WAY LINE FOR THE POINT OF BEGINNING; THENCE CONTINUE NORTH 00 DEGREES 32 MINUTES 56 SECONDS WEST 1000.02 FEET; THENCE SOUTH 89 DEGREES 31 MINUTES 37 SECONDS EAST 1005.65 FEET ALONG A LINE PARALLEL WITH THE AFORESAID SOUTH BOUNDARY OF THE SOUTHWEST 1/4; THENCE SOUTH 89 DEGREES 32 MINUTES 44 SECONDS EAST 2041.66 FEET ALONG A LINE PARALLEL WITH THE SOUTH BOUNDARY OF THE SOUTHWEST 1/4 OF SAID SECTION 6 TO THE BEGINNING OF A CURVE, CONCAVE SOUTHWESTERLY, HAVING A RADIUS OF 400.00 FEET AND AN INTERSECTION ANGLE OF 26 DEGREES 21 MINUTES 55 SECONDS; RUN THENCE SOUTHEASTERLY 184.06 FEET ALONG THE ARC OF SAID CURVE TO THE BEGINNING OF A REVERSE CURVE, CONCAVE NORTHEASTERLY, HAVING A RADIUS OF 300.00 FEET AND AN INTERSECTION ANGLE OF 27 DEGREES 13 MINUTES 07 SECONDS; RUN THENCE SOUTHEASTERLY 142.52 FEET ALONG THE ARC OF SAID CURVE TO THE END OF SAID CURVE; THENCE NORTH 89 DEGREES 36 MINUTES 04 SECONDS EAST 50.29 FEET TO THE BEGINNING OF A CURVE, CONCAVE NORTHWESTERLY, HAVING A RADIUS OF 300.00 FEET AND AN INTERSECTION ANGLE OF 25 DEGREES 22 MINUTES 31 SECONDS; RUN THENCE NORTHWESTERLY 132.86 FEET ALONG THE ARC OF SAID CURVE TO THE BEGINNING OF A REVERSE CURVE, CONCAVE SOUTHEASTERLY, HAVING A RADIUS OF 400.00 FEET AND AN INTERSECTION ANGLE OF 25 DEGREES 14 MINUTES 26 SECONDS; RUN THENCE NORTHEASTERLY 176.21 FEET ALONG THE ARC OF SAID CURVE TO THE END OF SAID CURVE; THENCE NORTH 89 DEGREES 12 MINUTES 59 SECONDS EAST 2642.54 FEET ALONG A LINE PARALLEL WITH THE SOUTH BOUNDARY OF THE SOUTHWEST 1/4 OF SECTION 5, TOWNSHIP 24 SOUTH, RANGE 29 EAST; THENCE NORTH 89 DEGREES 26 MINUTES 46 SECONDS EAST 794.15 FEET ALONG A LINE PARALLEL WITH THE SOUTH BOUNDARY OF THE SOUTHWEST 1/4 OF SAID SECTION 5; THENCE SOUTH 17 DEGREES 33 MINUTES 14 SECONDS EAST 104.57 FEET; THENCE SOUTH 89 DEGREES 26 MINUTES 46 SECONDS WEST 824.74 FEET; THENCE SOUTH 89 DEGREES 27 MINUTES 59 SECONDS WEST 2648.15 FEET; THENCE NORTH 89 DEGREES 32 MINUTES 44 SECONDS WEST 2701.45 FEET; THENCE NORTH 89 DEGREES 31 MINUTES 37 SECONDS WEST 1003.78 FEET TO THE POINT OF BEGINNING.

CONTAINING 115.8661 ACRES.

GRANTOR: MARTIN MARITTA CORPORATION

SCALE 1" = 400'

TWP 24 S.  
RG. 29 E.

CURVE NO.	RADIUS	DELTA	ARC	TANGENT
1	400.00	26°21'55"	184.06	93.69
2	300.00	27°13'07"	142.52	72.63
3	300.00	25°22'31"	132.86	67.54
4	400.00	25°14'26"	176.21	89.56

## DESCRIPTION

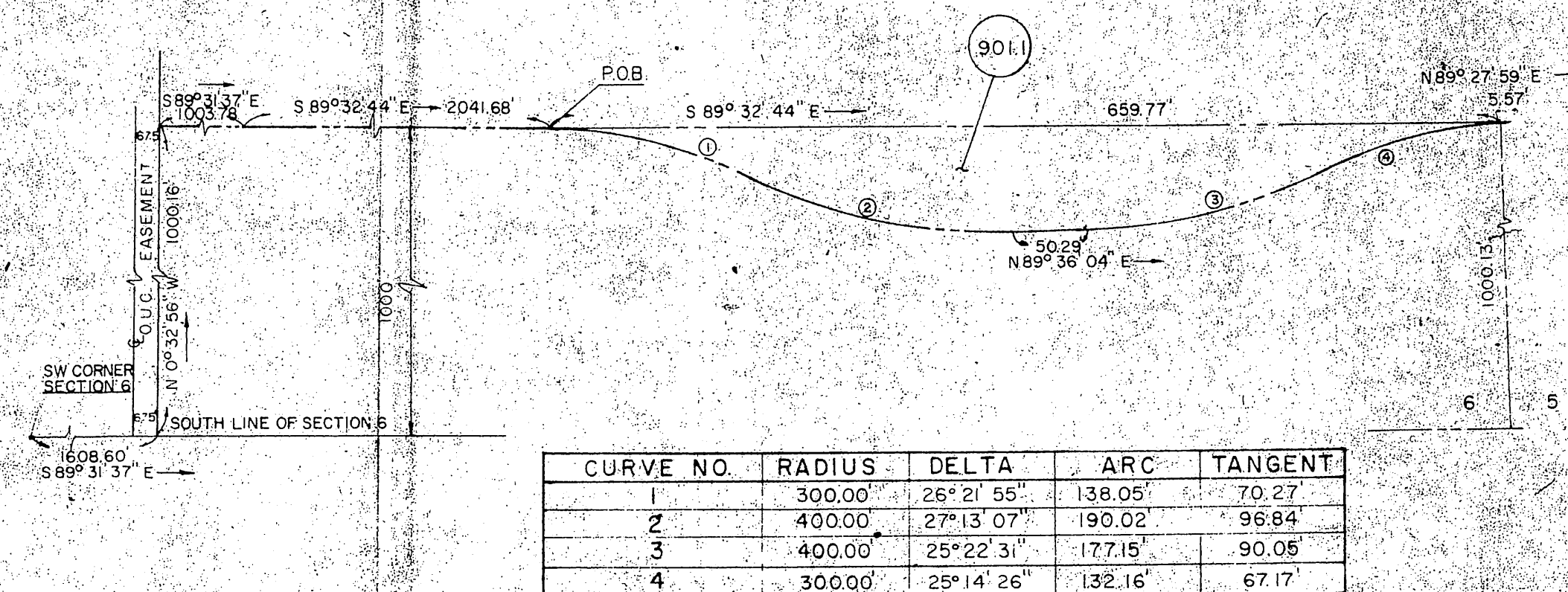
BORROW PIT NO. 2

SECTION	CONTRACT	INTERSTATE	SHEET NO.
75004	2502	4	10 OF 10

FROM THE SOUTHWEST CORNER OF SECTION 6, TOWNSHIP 24 SOUTH, RANGE 29 EAST, RUN SOUTH 89 DEGREES 31 MINUTES 37 SECONDS EAST 1608.60 FEET ALONG THE SOUTH BOUNDARY OF THE SOUTHWEST 1/4 OF SAID SECTION 6 TO A POINT ON THE EAST RIGHT OF WAY LINE OF THE ORLANDO UTILITIES COMMISSION TRANSMISSION LINE EASEMENT; THENCE NORTH 00 DEGREES 32 MINUTES 56 SECONDS WEST 1000.16 FEET ALONG SAID EAST RIGHT OF WAY LINE; THENCE SOUTH 89 DEGREES 31 MINUTES 37 SECONDS EAST 1003.78 FEET ALONG A LINE PARALLEL WITH THE AFORESAID SOUTH BOUNDARY OF THE SOUTHWEST 1/4; THENCE SOUTH 89 DEGREES 32 MINUTES 44 SECONDS EAST 2041.66 FEET ALONG A LINE PARALLEL WITH THE SOUTH BOUNDARY OF THE SOUTHWEST 1/4 OF SAID SECTION 6 TO THE POINT OF BEGINNING; THENCE CONTINUE SOUTH 89 DEGREES 32 MINUTES 44 SECONDS EAST 659.77 FEET; THENCE NORTH 89 DEGREES 27 MINUTES 59 SECONDS EAST 5.57 FEET ALONG A LINE PARALLEL WITH THE SOUTH BOUNDARY OF THE SOUTHWEST 1/4 OF SECTION 5, TOWNSHIP 24 SOUTH, RANGE 29 EAST TO THE BEGINNING OF A CURVE, CONCAVE SOUTHEASTERLY, HAVING A RADIUS OF 300.00 FEET AND AN INTERSECTION ANGLE OF 25 DEGREES 14 MINUTES 26 SECONDS; RUN THENCE SOUTHWESTERLY 132.16 FEET ALONG THE ARC OF SAID CURVE TO THE BEGINNING OF A REVERSE CURVE, CONCAVE NORTHWESTERLY, HAVING A RADIUS OF 400.00 FEET AND AN INTERSECTION ANGLE OF 25 DEGREES 22 MINUTES 31 SECONDS; RUN THENCE SOUTHWESTERLY 177.15 FEET ALONG THE ARC OF SAID CURVE TO THE END OF SAID CURVE; THENCE SOUTH 89 DEGREES 36 MINUTES 04 SECONDS WEST 50.29 FEET TO THE BEGINNING OF A CURVE, CONCAVE NORTHEASTERLY, HAVING A RADIUS OF 400.00 FEET AND AN INTERSECTION ANGLE OF 27 DEGREES 13 MINUTES 07 SECONDS; RUN THENCE NORTHEASTERLY 180.02 FEET ALONG THE ARC OF SAID CURVE TO THE BEGINNING OF A REVERSE CURVE, CONCAVE SOUTHWESTERLY, HAVING A RADIUS OF 300.00 FEET AND AN INTERSECTION ANGLE OF 26 DEGREES 21 MINUTES 55 SECONDS; RUN THENCE NORTHWESTERLY 132.86 FEET ALONG THE ARC OF SAID CURVE TO THE POINT OF BEGINNING.

CONTAINING 0.6250 ACRES.

GRANTOR: ORLANDO CENTRAL PARK, INC.

TWP 24 S.  
RG. 29 E.

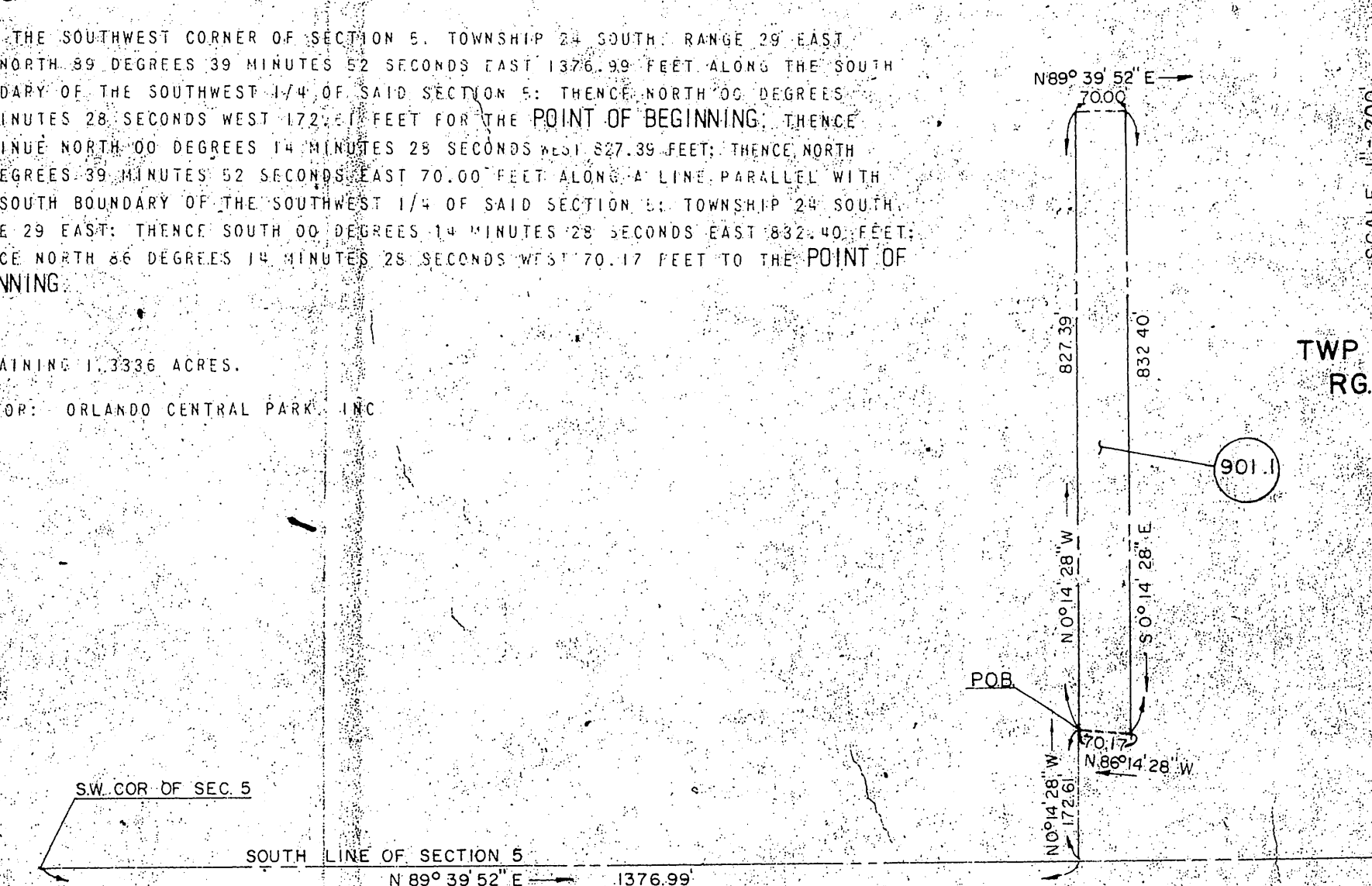
## DESCRIPTION

BORROW PIT NO. 3

FROM THE SOUTHWEST CORNER OF SECTION 5, TOWNSHIP 24 SOUTH, RANGE 29 EAST, RUN NORTH 89 DEGREES 39 MINUTES 52 SECONDS EAST 1376.99 FEET ALONG THE SOUTH BOUNDARY OF THE SOUTHWEST 1/4 OF SAID SECTION 5; THENCE NORTH 00 DEGREES 14 MINUTES 28 SECONDS WEST 172.61 FEET FOR THE POINT OF BEGINNING; THENCE CONTINUE NORTH 00 DEGREES 14 MINUTES 28 SECONDS WEST 827.39 FEET; THENCE NORTH 89 DEGREES 39 MINUTES 52 SECONDS EAST 70.00 FEET ALONG A LINE PARALLEL WITH THE SOUTH BOUNDARY OF THE SOUTHWEST 1/4 OF SAID SECTION 5; TOWNSHIP 24 SOUTH, RANGE 29 EAST; THENCE SOUTH 00 DEGREES 14 MINUTES 28 SECONDS EAST 832.40 FEET; THENCE NORTH 66 DEGREES 14 MINUTES 26 SECONDS WEST 70.17 FEET TO THE POINT OF BEGINNING.

CONTAINING 1.3336 ACRES.

GRANTOR: ORLANDO CENTRAL PARK, INC.

TWP 24 S.  
RG. 29 E.

ORANGE COUNTY, FLORIDA

Added Sheet 10.		J.E.G.	F.J.R.	7-10-72
NO.	REVISION		BY	DATE
STATE OF FLORIDA DEPARTMENT OF TRANSPORTATION INTERSTATE 4-BEE LINE CONNECTOR				
BORROW PIT EASEMENTS				
W. K. DAUGHERTY CONSULTING ENGINEERS SECTION ENGINEERS J. E. GREINER COMPANY				
MADE	F.J.R.	DATE 7-10-72	TRACED	F.J.R.
CHECKED	J.E.A.	DATE 7-10-72		
Sec. 75004-2502				Sh. 10